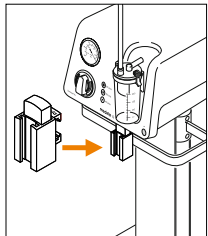
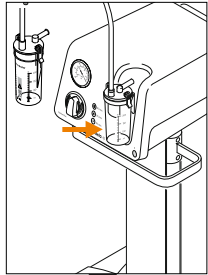
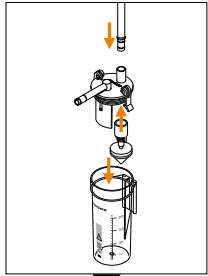


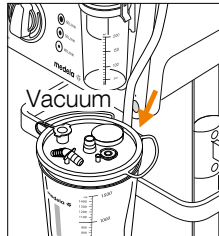
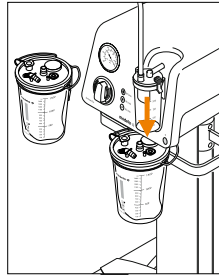
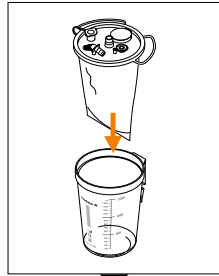
# Medela Dominant Flex pump



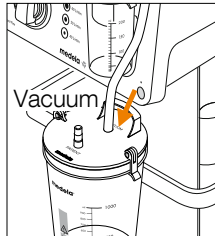
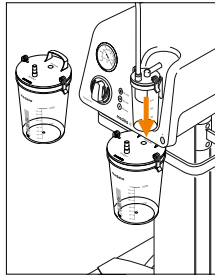
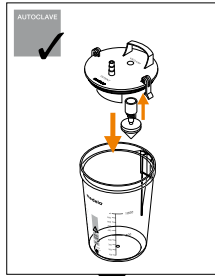
1



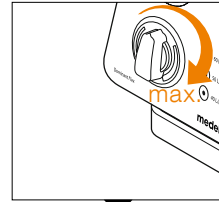
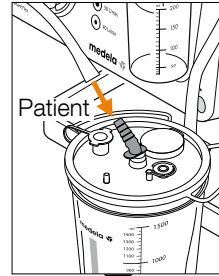
2



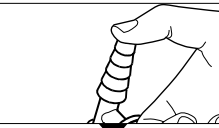
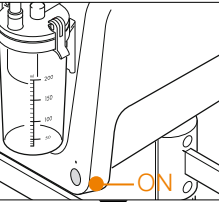
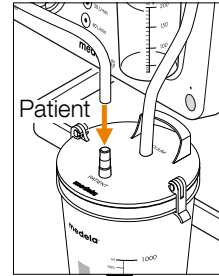
or



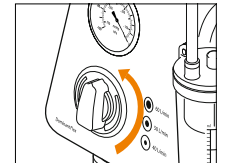
3



or



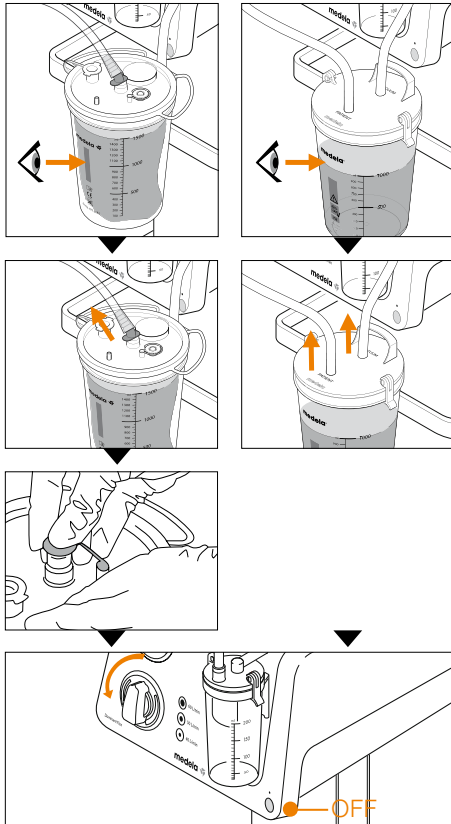
4



Sea Level	Vacuum	Tolerance +/- 15%
+ 2000 m	- 72 kPa	- 540 mmHg
+ 1000 m	- 84 kPa	- 592 mmHg
+ 500 m	- 89 kPa	- 668 mmHg
0 m	- 95 kPa	- 713 mmHg

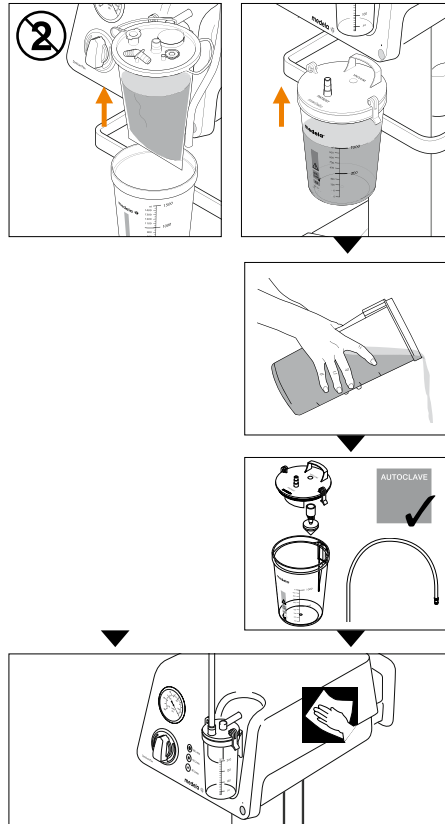
5

or



6

or



CE 0123

This Quick Card in no way replaces the Instructions for Use REF 200.5522/200.5523


 Medela AG  
 Lättichstrasse 4b  
 6341 Baar, Switzerland  
[www.medela.com](http://www.medela.com)

Precious life – Progressive care

© Medela AG/200.6109/2013-04/C